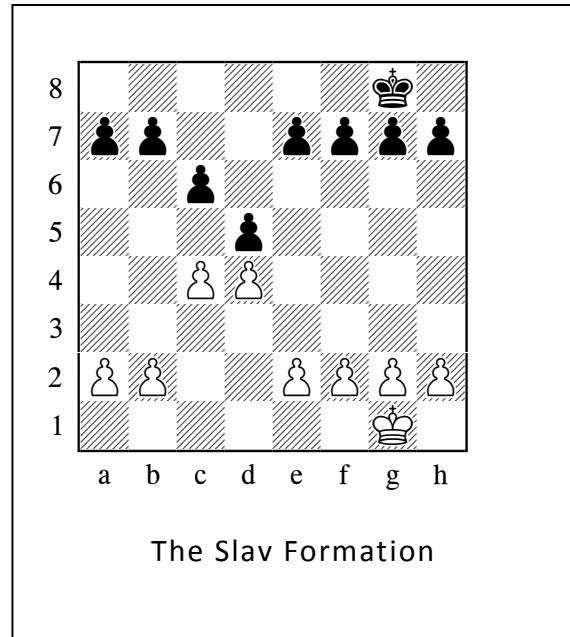
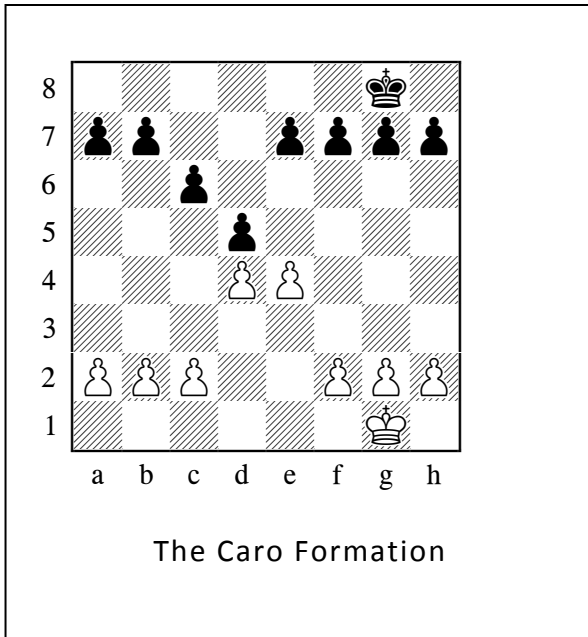
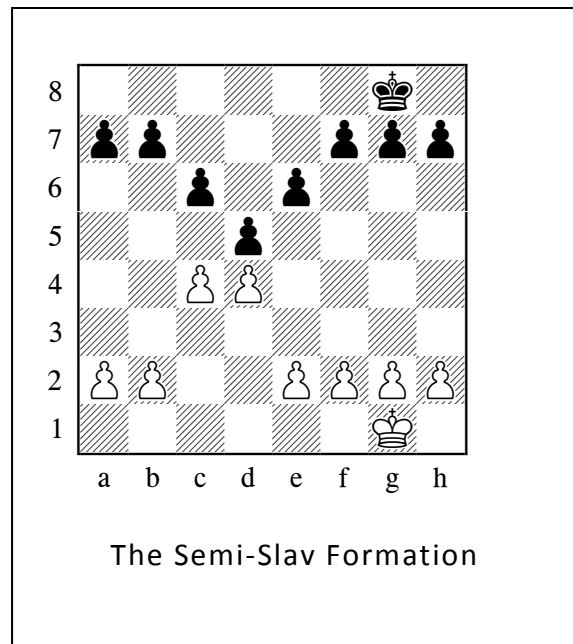
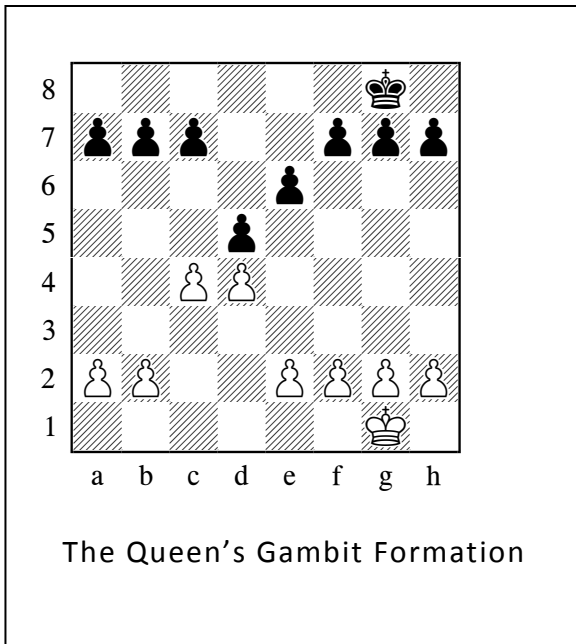


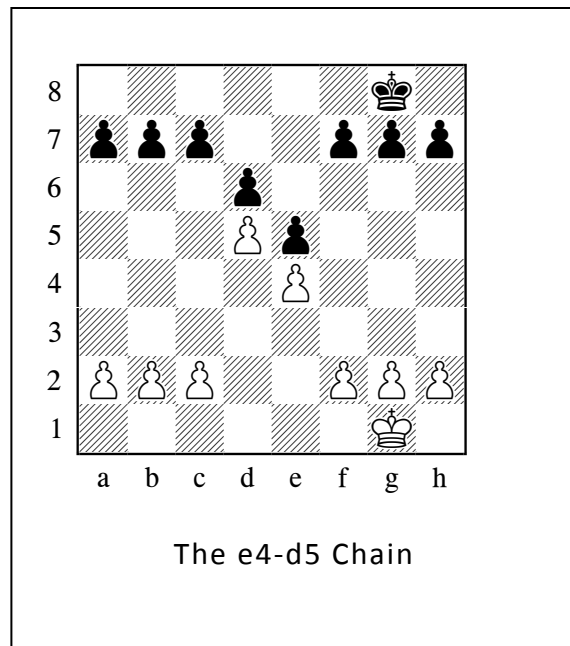
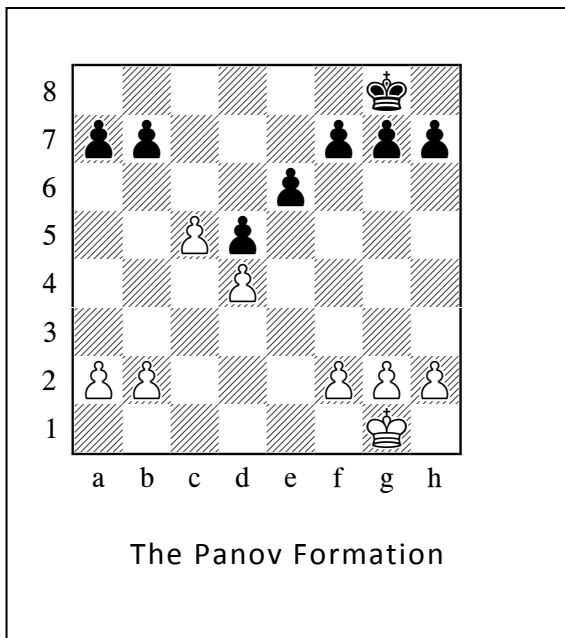
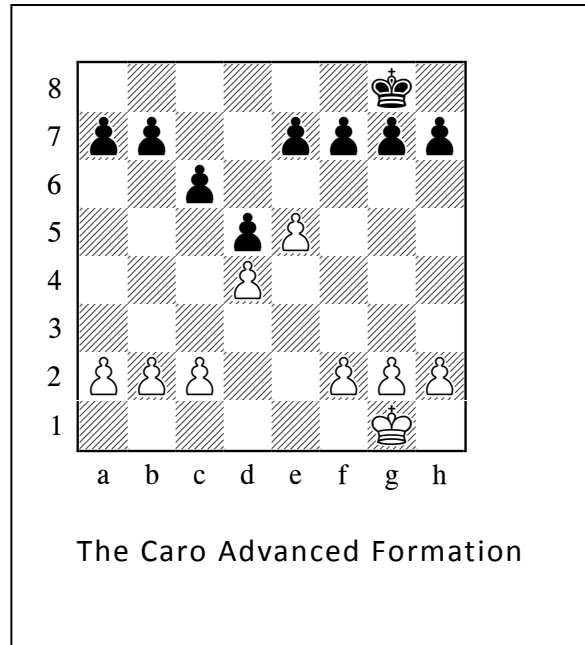
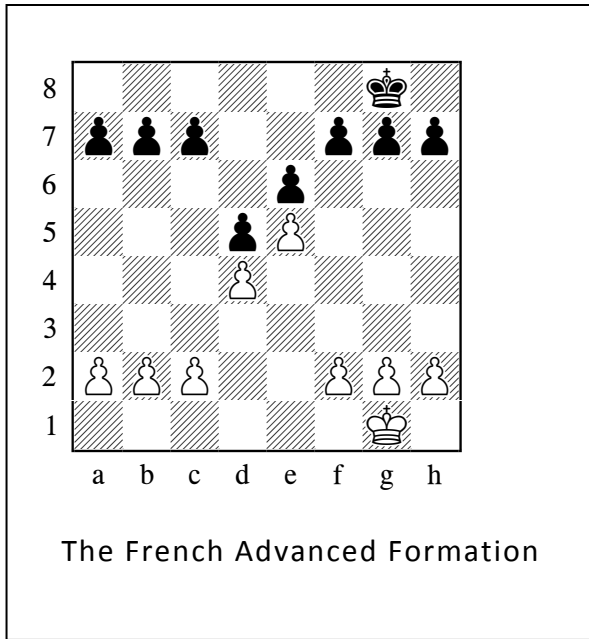
The Caro-Slav Family



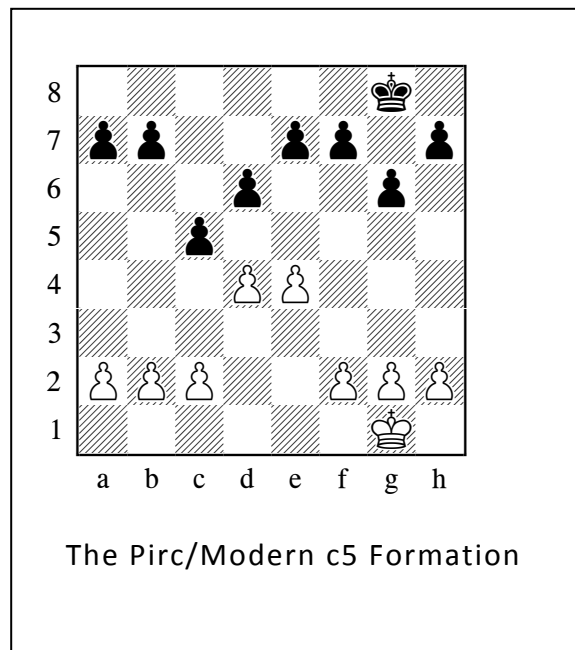
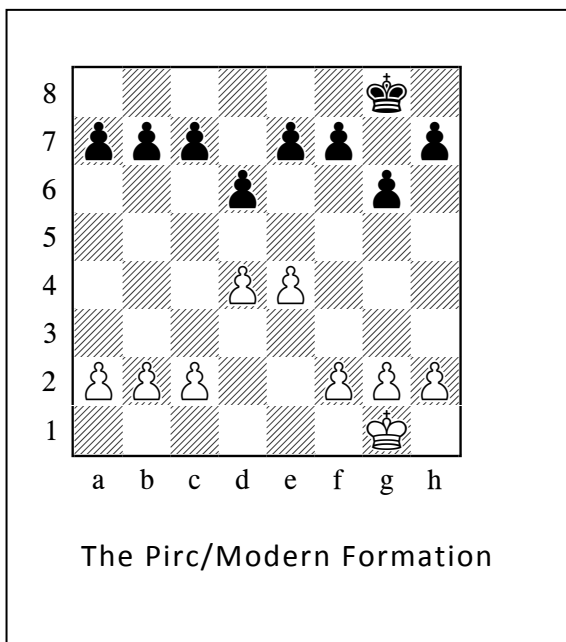
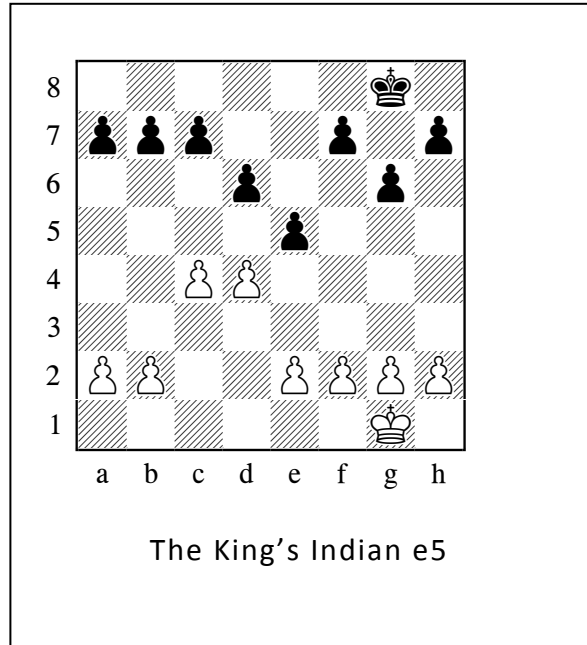
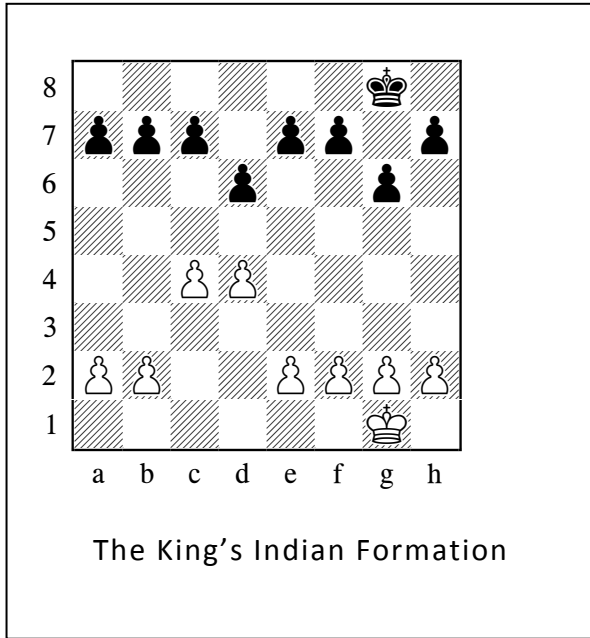
The Queens Gambit/Semi-Slav



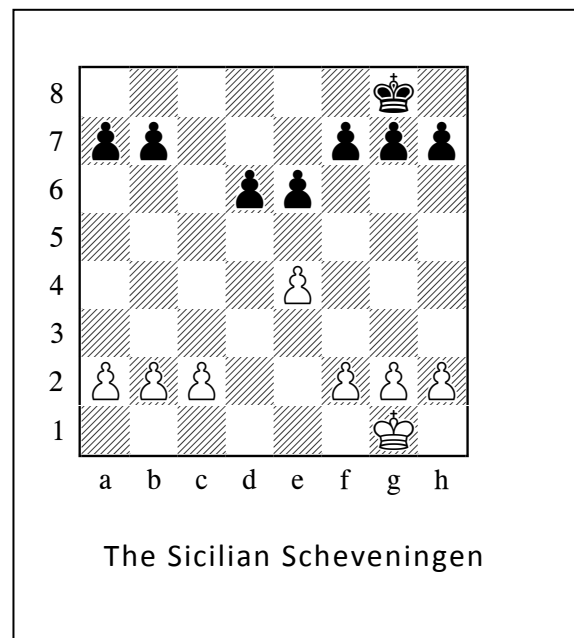
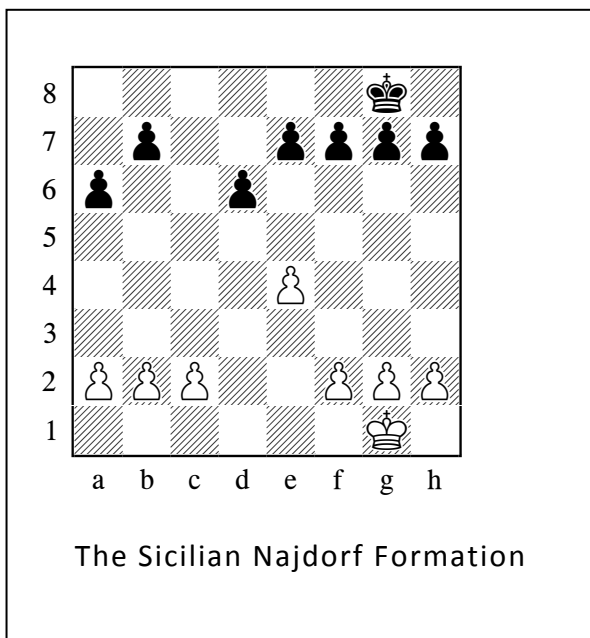
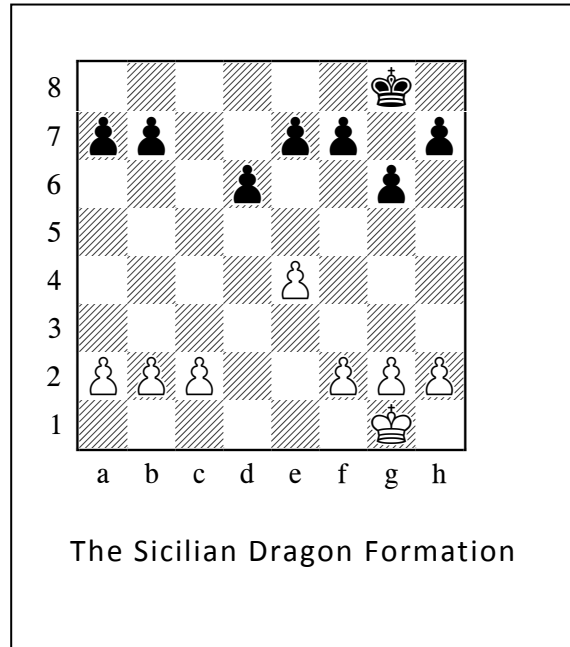
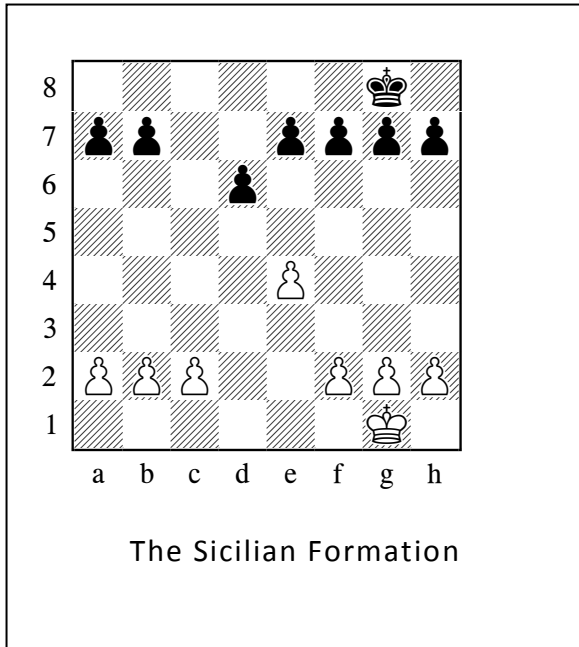
The Chain Formations



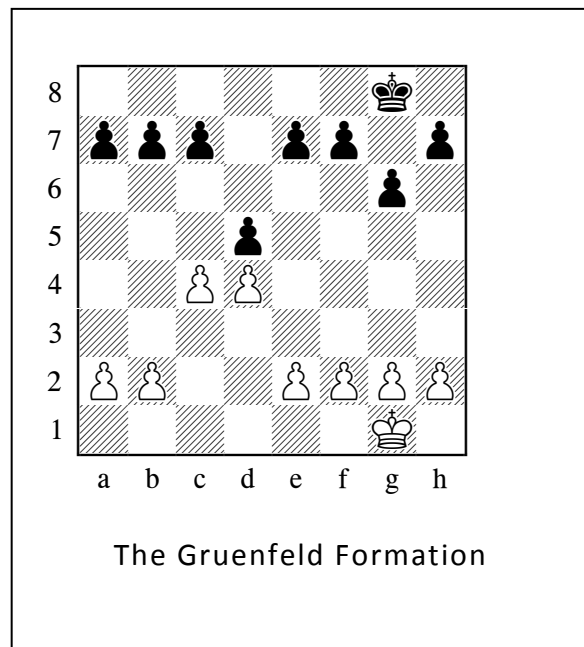
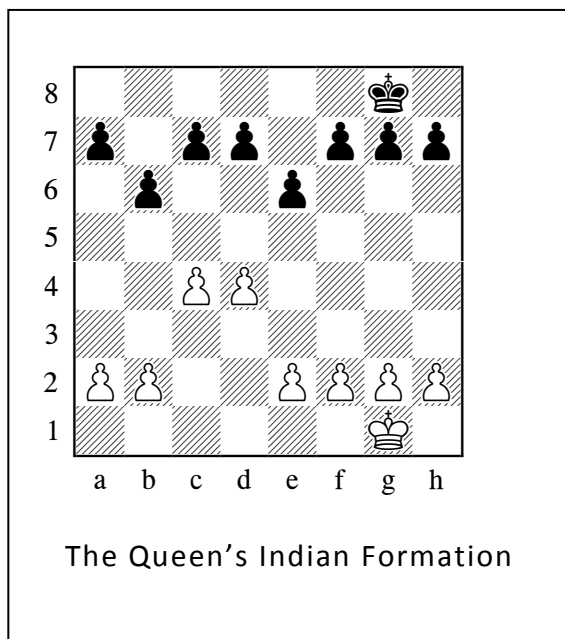
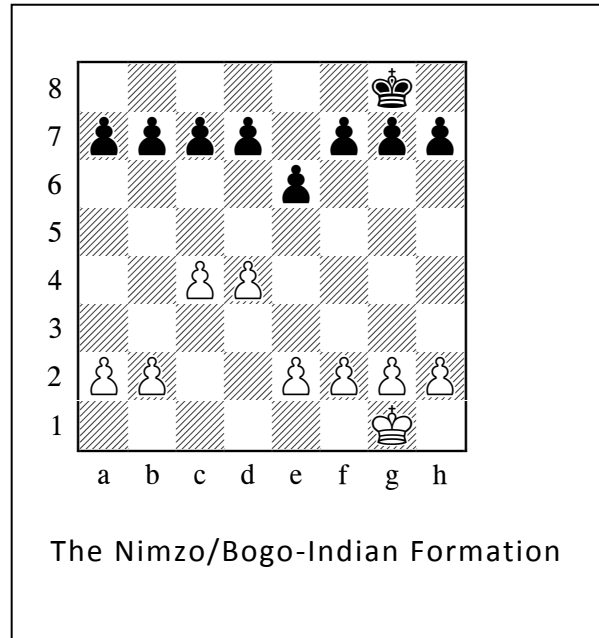
The King's Indian /Pirc/Modern



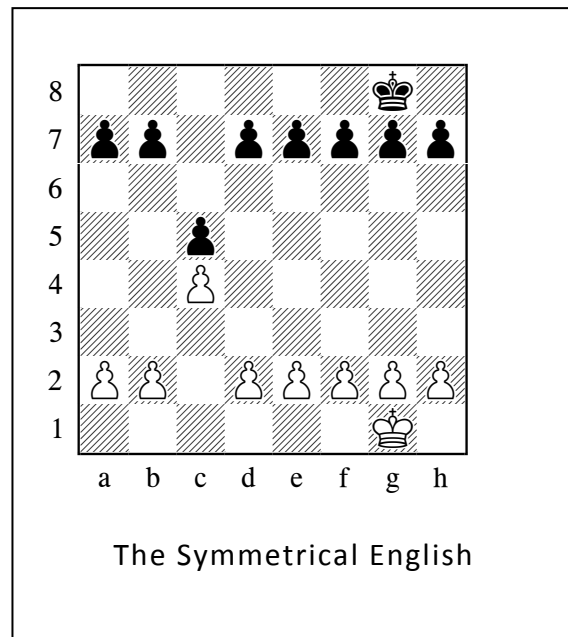
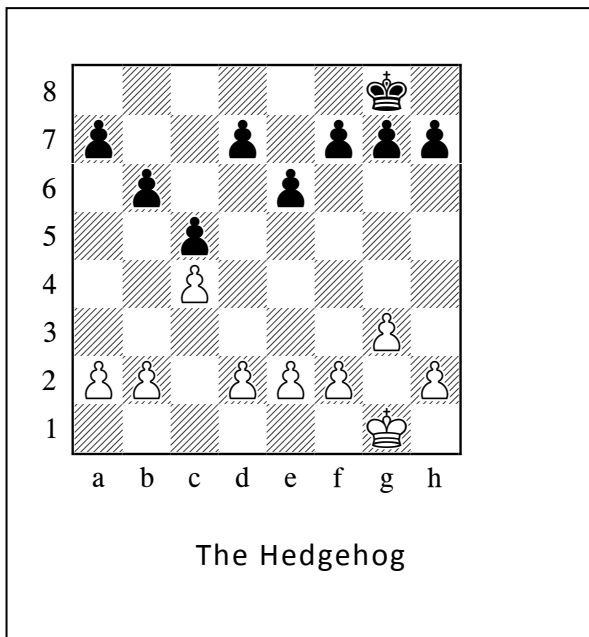
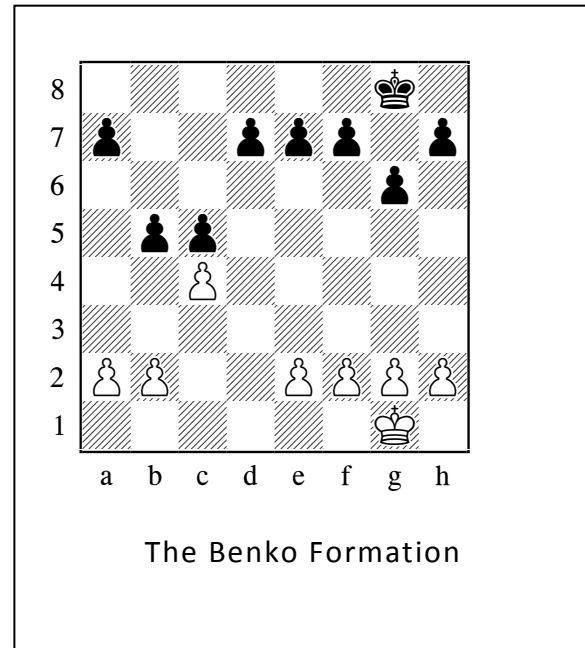
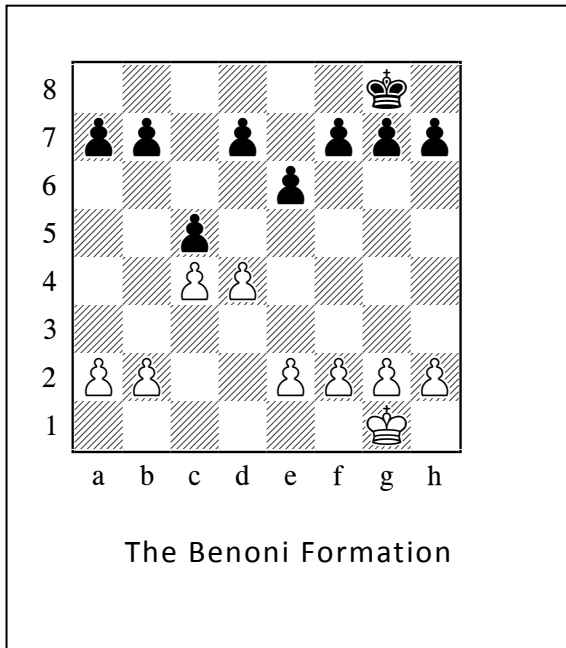
The Sicilian



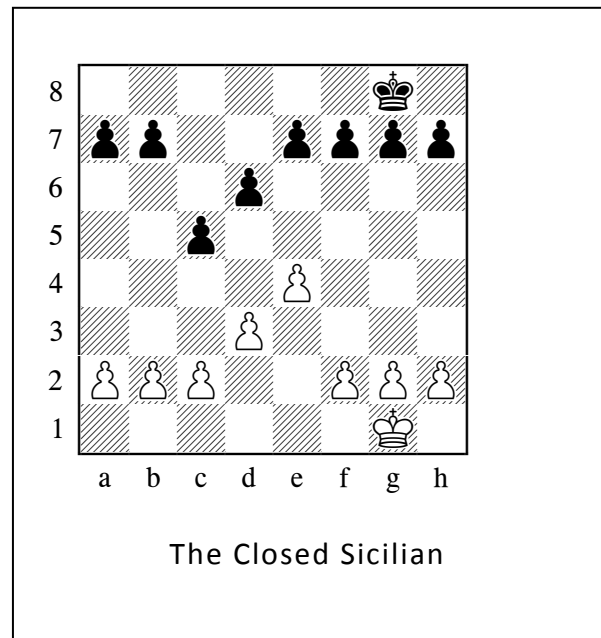
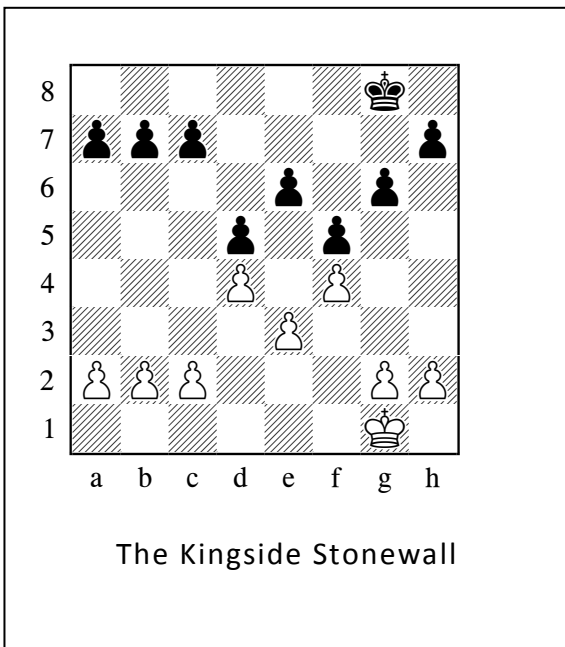
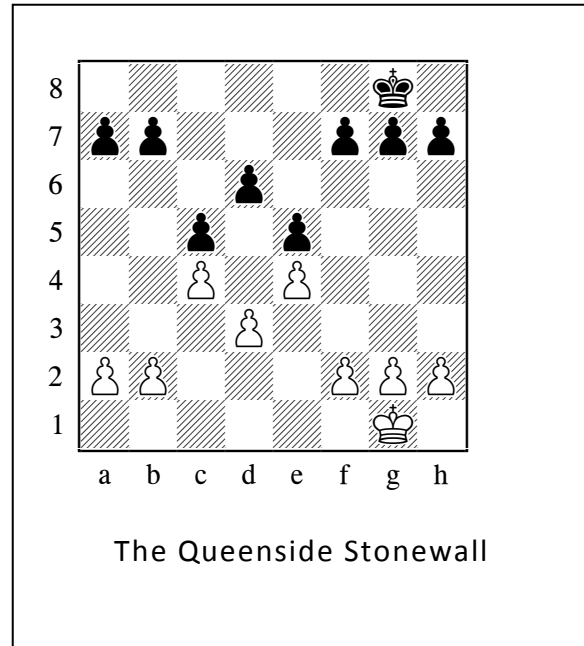
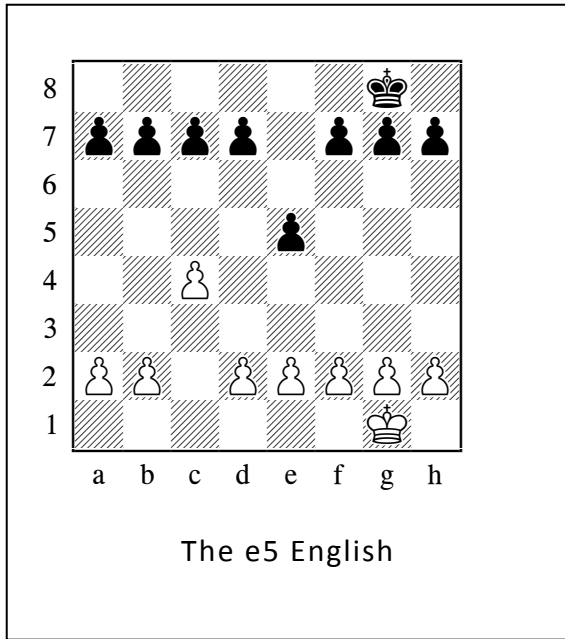
Nimzo, Queen's, and Gruenfeld Indian



Benoni, Benko , Hedgehog and English



English, Stonewalls and Closed Sicilian



Dutch, Ideal and Ruy Lopez

